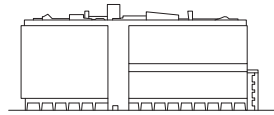
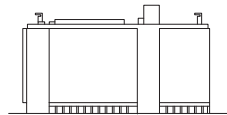


UNITÉS

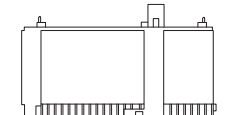
The Unité was thought as the base unit of a bigger system, a new type of city designed by Le Corbusier that was never built. This social housing project is based on principles of modernist urban design, a vertical garden-city with services and common spaces in which everyone can find a balance between individual and collective needs, an autonomous building surrounded by nature designed to make people meet and socialize.



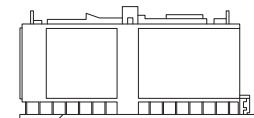
MARSEILLE, 1946
137 x 24 x 56 m
341 apartments



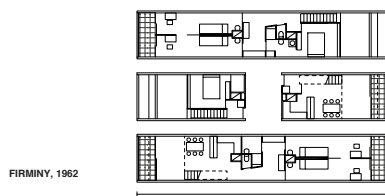
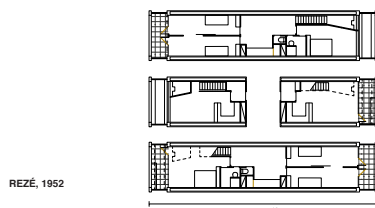
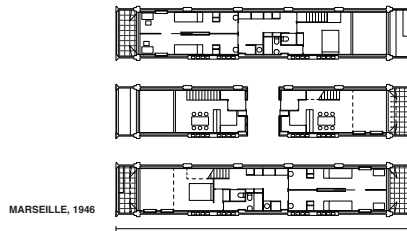
REZÉ, 1946
108 x 19 x 52 m
295 apartments

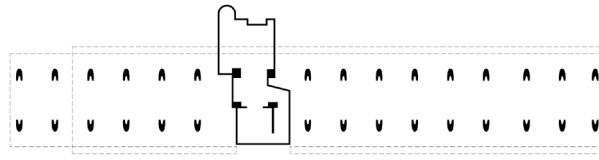


BRIEY-EN-FORÊT, 1957
110 x 19 x 52 m
339 apartments

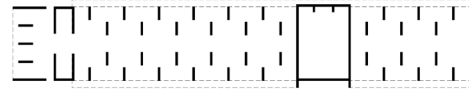


FIRMINY, 1967
131 x 21 x 54 m
414 apartments

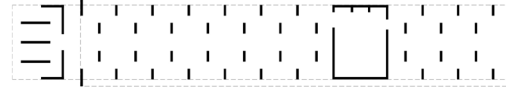




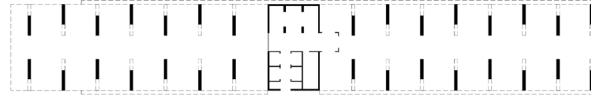
MARSEILLE, 1946



REZÉ, 1952



BRIEY-EN-FORÊT, 1957



FIRMINY, 1962

