

# TYOLOGY

A “machine à habiter”, the Unité d’Habitation relies on superposed duplexes to maximize the surface assigned to housing. The units plans are developed according to the Modulor; each function within the dwelling is precisely circumscribed and defined. Three modules, living space, parent and children’s rooms can be combined in many ways to fit different needs.

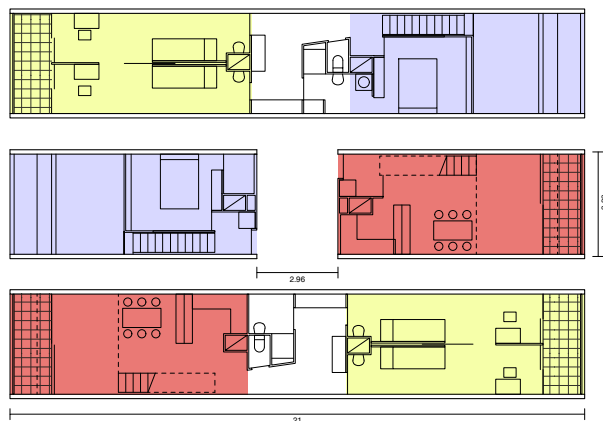
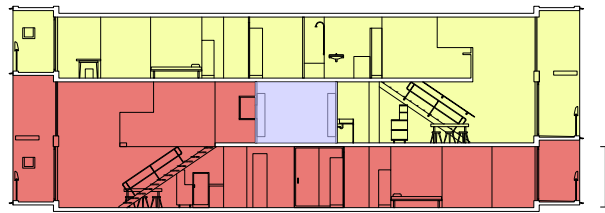




Photo: Olivier Martin Gambier

