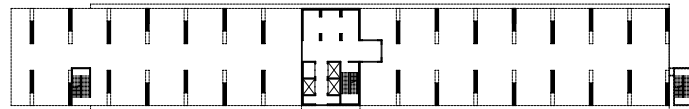
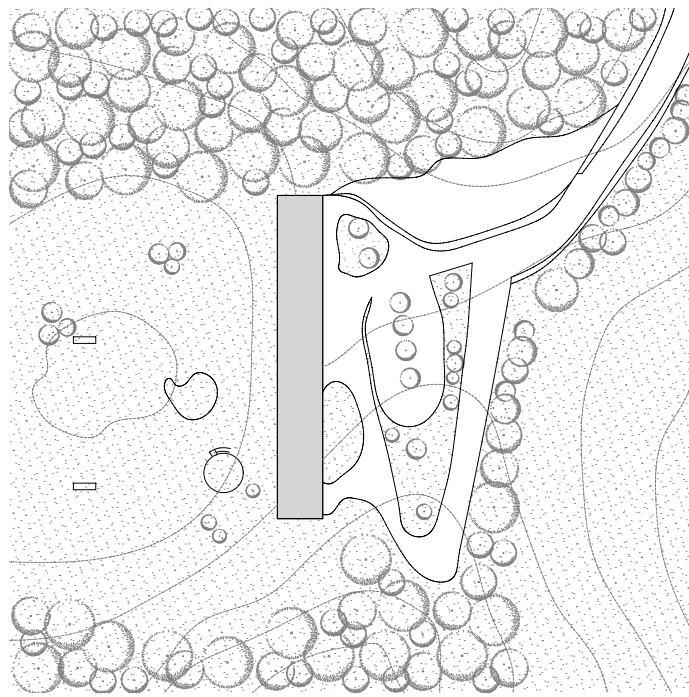
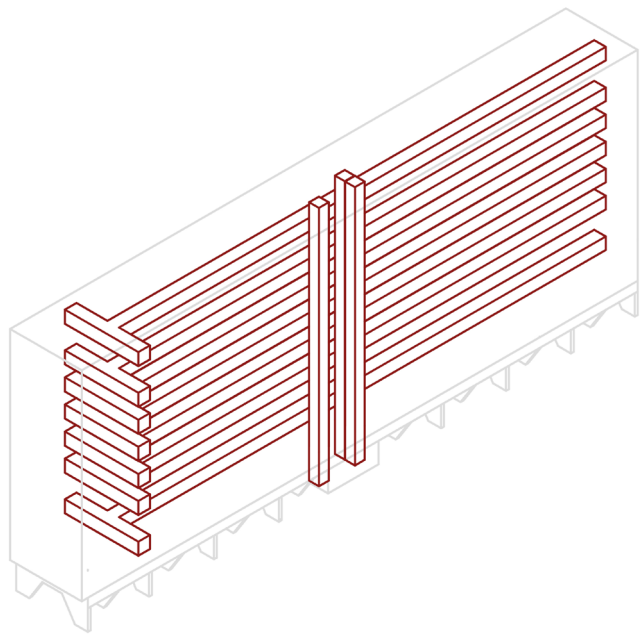


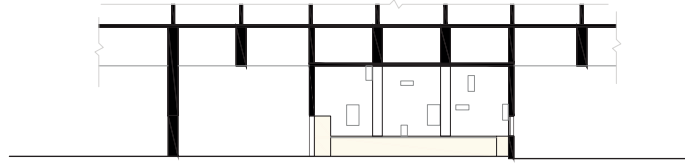
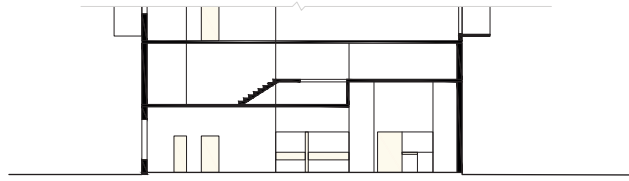
COMMON SPACES

From the ground floor to the rooftop, common spaces enlarge the inhabitants living space and offer opportunities for them to meet, transforming the Unité into a “vertical city”. The pilotis free the ground, the large distribution corridors are called “rue intérieure” and a school is located in the last three levels. Even if, in Firminy, common facilities have been reduced due to cost issues, they remain a potential for inhabitants to build a community upon.









This architectural drawing is a detailed grid of structural elements, likely a floor plan or a section of a building. The grid consists of numerous small squares, each containing technical specifications and measurements. A prominent feature is a thick red horizontal bar that spans across the middle of the grid, labeled 'R1'. Other red highlights are present in various cells, particularly in the top and bottom rows, labeled 'N5', 'N2', and 'N1'. The drawing is highly technical and precise, with small text and symbols throughout.

